



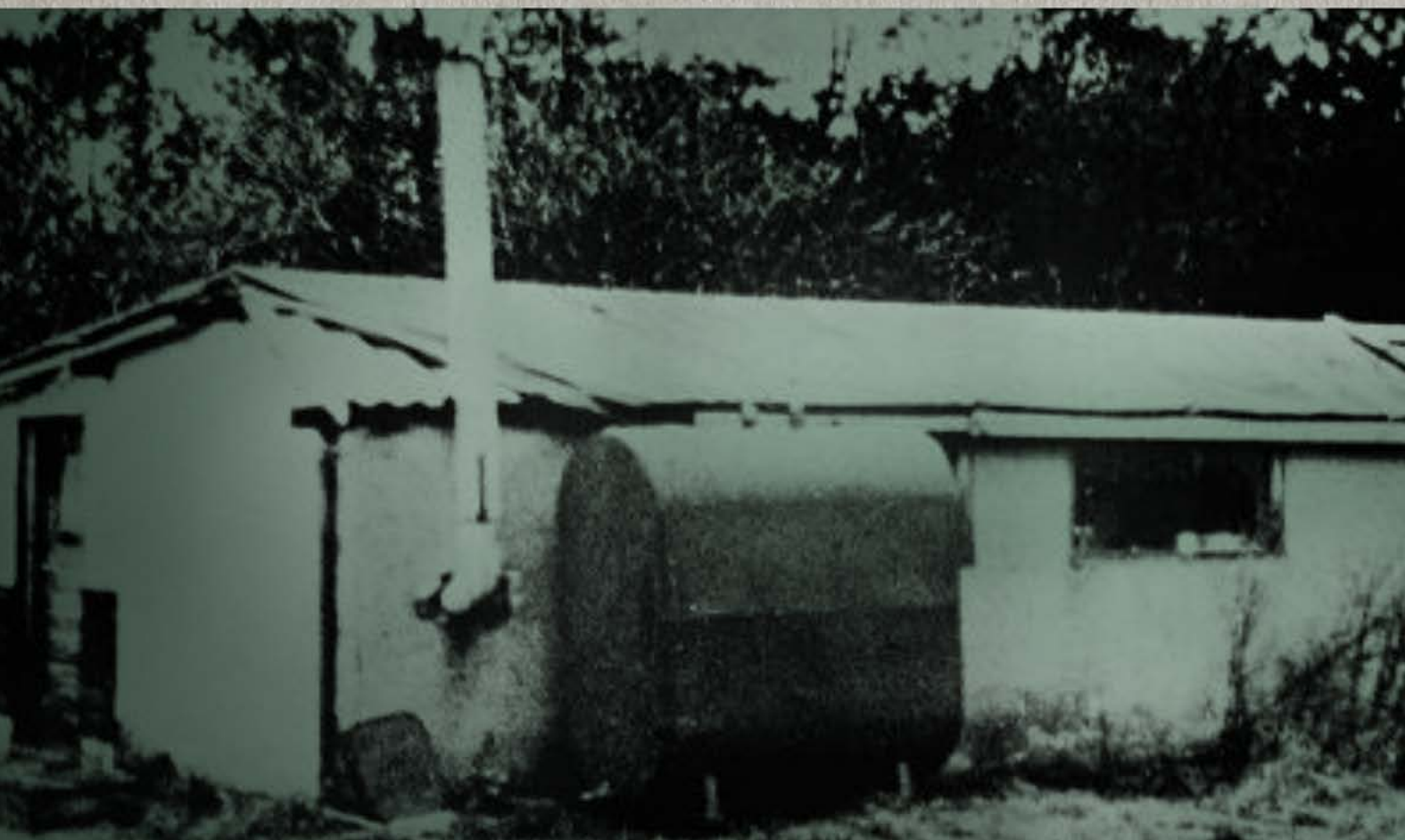
Jamo[®]
OUTDOOR

1966

In the fishing village of Glyngøre, Denmark, carpenter Preben Jacobsen begins building loudspeakers in his hen house. Two years later, he will bring his brother-in-law Julius Mortensen into the business. Jacobsen + Mortensen = JAMO. By 1978, one million Jamo loudspeakers will be produced.



Has Preben i Glyngøre 12/4.0



OVER 50 YEARS OF ADVANCED ACOUSTIC DESIGN



TODAY

A high-tech audio collaborative utilizing resources from around the globe, Jamo crafts relevant products that look amazing, are easy to use and sound fantastic. Honoring our Scandinavian design roots, and focused on the modern minimalist lifestyle, Jamo delivers contemporary style with high-performance sound. Our innovative loudspeakers are ideal for the spaces where you live and play. From thundering home cinema, to powerful and beautifully integrated architectural solutions – JAMO is DESIGNED FOR LIFE.

Jamo[®]
O U T D O O R



ENJOY IT ANYWHERE

The new Jamo Outdoor Speakers are designed from the ground up for even better sound from smaller form factors with 50 years of high-performance audio experience by one of the most legendary and reliable audio companies in the world.

IMMERSE YOUR ENVIRONMENT WITH GREAT SOUND

Jamo Outdoor Series landscape satellites, on-wall and rock speakers incorporate full range, powerful, balanced sound in every listening position. Subwoofer options include half-burial and rocks, designed with dual voice coil IMG woofers, provide powerful, dynamic, balanced low frequencies for all outdoor audio.

OPTIMIZED TO DELIVER

The satellites, on-wall and rock speakers are weatherproof and IP45 certified ensuring the speakers deliver the best in sound year round. The subwoofers remain hidden in their environment and provide excellent flexibility in placement.

DESIGNED FOR FLEXIBILITY

Featuring both low impedance and 70V/100V compatibility, this easy-to-install system can be custom-tailored to any situation. Ground stake options make the Jamo landscape speakers the ideal outdoor audio solution for commercial and residential environments.

Jamo[®]
O U T D O O R



LANDSCAPE AND ROCK SATELLITES



I/O SERIES



JL-4
4" FULL RANGE LANDSCAPE SATELLITE



JR-4
4" FULL RANGE ROCK SATELLITE



JR-5
5" TWO-WAY ROCK SATELLITE



JR-6
6.5" STEREO ROCK SATELLITE

HIGH PERFORMANCE OUTDOOR AUDIO

With IMG woofers and full range drivers, Jamo Outdoor Speakers are voiced to match their home theater solutions, delivering an enveloping experience while virtually disappearing into the landscape.

8 OHM/70V/100V COMPATIBILITY

From small residential systems to massive commercial installs, Jamo Outdoor Series landscape and rock speakers are designed to make any installation job quick and easy. For distributed line application, JL-4 landscape and JR-4 rock satellites, and the JR-8SW rock subwoofer are 70V ready. The JR-5 rock speaker features a 70V/100V multi-tap transformer with 8 ohm bypass, selectable from an easily accessible, tool-free rotary switch on the bottom of the speaker.

MAXIMUM INSTALL FLEXIBILITY

With a 10" ground stake option (sold separately) for satellites, as well as embedded security hooks on the rocks, Jamo landscape and rock speakers can be installed - tool-free - making it the ideal solution for high quality audio in any residential or commercial space, outdoor living area.

ALL-WEATHER DURABILITY

Constructed from rustproof, durable, all-weather materials, the Jamo landscape and rock speakers are lab tested and certified with an IP45 rating to withstand the elements.



I/O 3S
STEREO 2-WAY ALL-WEATHER
SURFACE MOUNT SPEAKER



I/O 4
4" 2-WAY ALL-WEATHER
SURFACE MOUNT SPEAKER



I/O 5
5.25" 2-WAY ALL-WEATHER
SURFACE MOUNT SPEAKER



I/O 6
6.5" 2-WAY ALL-WEATHER
SURFACE MOUNT SPEAKER

DESIGN AND PERFORMANCE

The smooth lines, satin painted finish, and ultra-compact design of the Jamo I/O Series speakers allow them to blend seamlessly into even the most luxurious of outdoor living spaces, while the long-throw aluminum HCC woofer and 1" aluminum tweeter provide detailed, dynamic, balanced sound.

ALL-WEATHER DURABILITY

A powder coated grille mated to a UV-resistant, ABS cabinet provides the utmost in all-weather capability. The new Jamo I/O Series is designed and built to offer great outdoor audio year round.

FLEXIBLE INSTALLATION

The new Jamo I/O Series features an ultra-durable powder coated steel C-bracket for simple, easy, and reliable installation in any indoor or outdoor environment.



I/O 6.52DVCA2 FG
6.5" 2-WAY STEREO IN-CEILING SPEAKER



I/O 8.52DVCA2 FG
8" 2-WAY STEREO IN-CEILING SPEAKER





SUBWOOFERS



JL-10SW
10" HALF-BURIAL LANDSCAPE SUBWOOFER



JR-8SW
8" DUAL VOICE COIL ROCK SUBWOOFER

HIGH-PERFORMANCE OUTDOOR AUDIO

With a long-throw IMG woofer, Jamo Outdoor Series landscape and rock subwoofers use the same high-performance acoustic design philosophies of our home theater speakers, bringing dynamic, detailed sound to any outdoor living space.

DUAL VOICE COIL = GREAT SOUNDING 70V/100V

For distributed line applications, these models use a transformerless dual voice coil designed for 70V/100V operation. This design also allows for high-performance, low impedance operation - 8 ohm stereo or 4 ohm mono for the ultimate in system flexibility.

ALL-WEATHER DURABILITY

With an IP45 rating, Jamo Outdoor Series landscape and rock subwoofers are lab-tested and certified to offer great sounding, reliable outdoor audio that withstands the elements.



AMPLIFIERS



JDA-500
4 X 125W DSP AMPLIFIER

HIGH-PERFORMANCE POWER PLATFORM

The Jamo JDA-500 DSP amplifier offers power and performance in a sleek, high-tech, one rack unit solution. JDA-500 DSP amplifiers deliver 500W class G design, for clean, dynamic power.

FLEXIBLE I/O

Boasting matrixed 4x4 I/O with balanced Phoenix connector inputs and speaker outputs (up to 12 gauge wire), Jamo JDA Amplifiers also provide unbalanced RCA inputs and outputs (throughs), making them one of the most flexible power solutions on the market today.

70V/100V/LOW IMPEDANCE COMPATIBILITY

From small residential systems to massive commercial installs, the Jamo JDA Amplifiers are designed for maximum install flexibility – offering low impedance and 70V/100V compatibility for distributed line applications. Fully independent, two channels low impedance can be run with another bridged channel 70V/100V for full customization and optimization of the system.

SIMPLISTIC DSP CONTROL AND SET-UP

The myriad of I/O, impedance, and acoustic settings are fully customizable through a browser-based DSP menu. In addition to password protected channel assignments, gain settings, EQ, and limiting, the DSP amplifier provides presets for almost every Jamo speaker on the market – optimizing acoustic performances and power handling with a single click. The entire DSP menu is accessible from any mobile or hardwired device, providing the JDA DSP amplifier is connected to the same network.

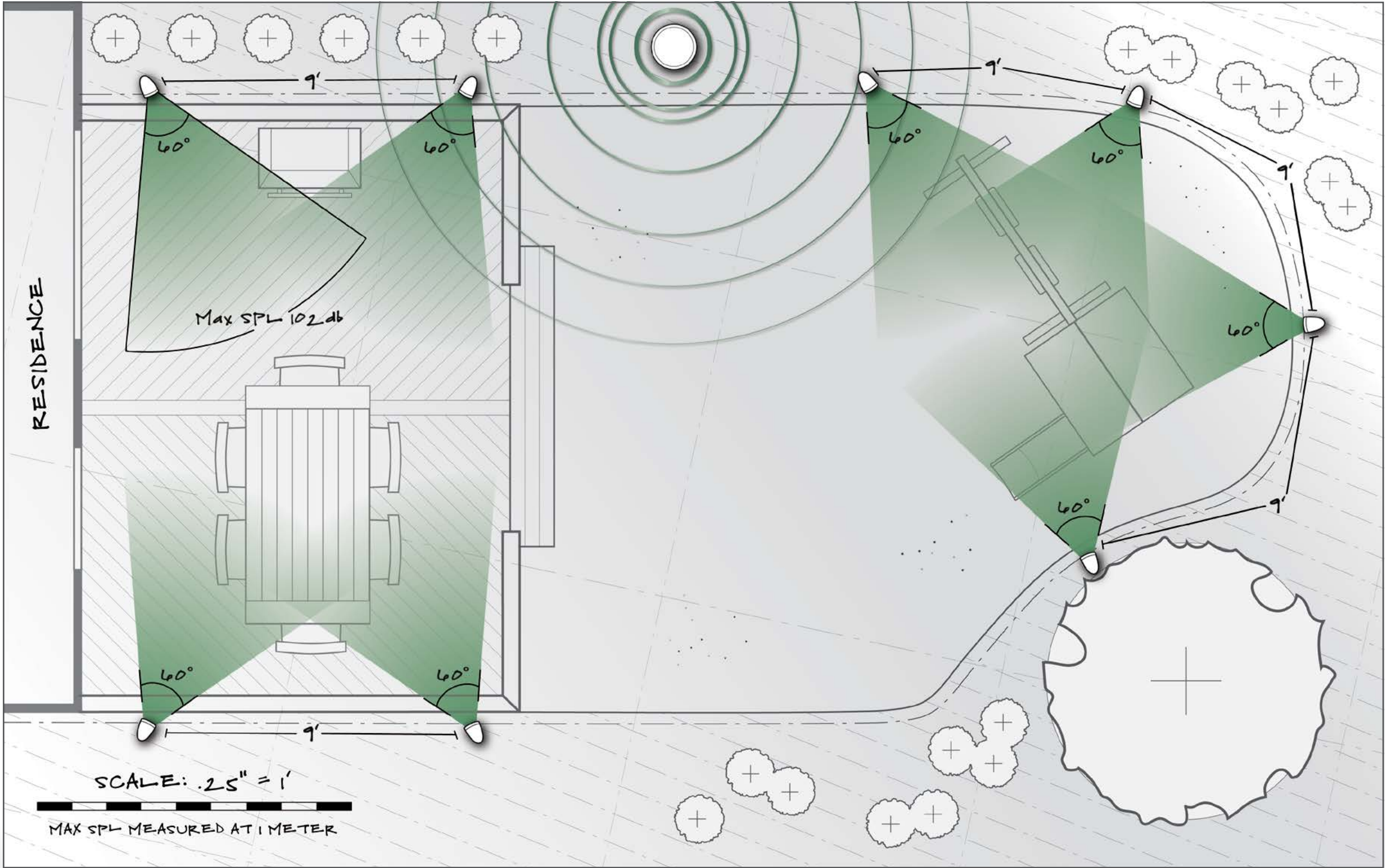


Up to 1000' sq. - 1 Zone

FULL AUDIO FOR THE WHOLE FAMILY

This smaller single-family backyard utilizes the Jamo landscape speakers and single half-burial subwoofer in a single zone for dynamic, detailed sound anywhere in the yard. Utilizing the Jamo JL-4810 landscape speaker system with (8) JL-4 landscape satellite speakers connected on a mono 70V/100V rail for a

consistent listening experience anywhere in the yard. (1) JL-10SW half-burial subwoofer produces powerful low frequencies throughout the entire area, also connected in 70V/100V mono. The entire system is powered by (1) JDA-500 DSP amplifier.



SPACE SIZE: UP TO 1000' SQ	
TOTAL ZONES: 1	
ZONE 1	(1) JL-4810 LANDSCAPE SYSTEM CONTAINING: (8) JL-4 SATELLITE SPEAKERS (8) JGS-10 GROUND STAKES (1) JL-10SW HALF-BURIAL SUBWOOFER (2) JDA-500 DSP AMPLIFIER

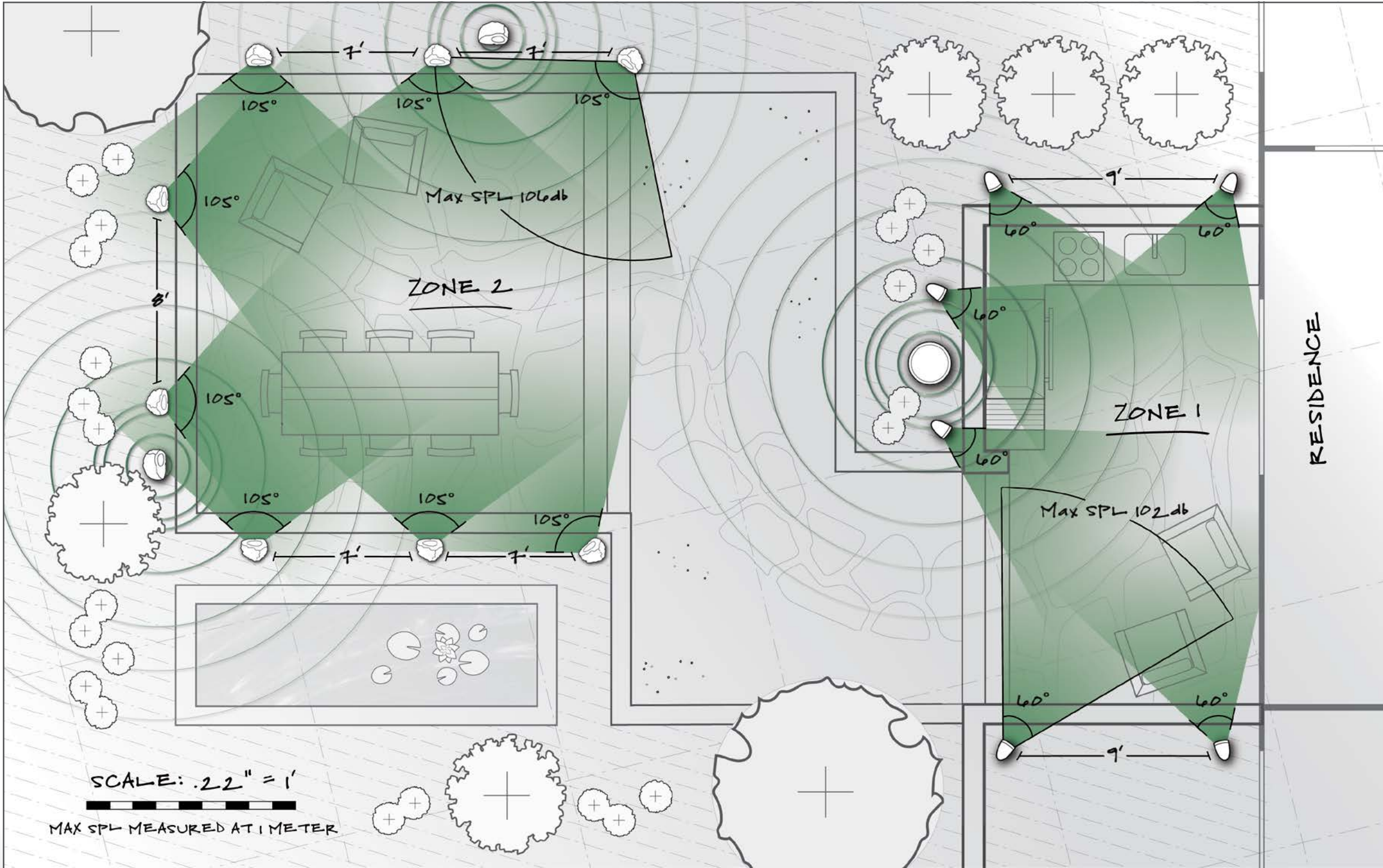


Up to 2000' sq - 2 Zones

DUAL ZONE AUDIO ENJOYMENT

This medium-sized outdoor living space features two distinct zones of audio. The outdoor kitchen area (Zone 1) features (6) JL-4 landscape satellite speakers and (1) JL-10SW subwoofer connected in 70V/100V mono, all wired to (1) JDA-500 DSP amplifier

The eating/sitting area (Zone 2) is slightly larger, so (8) JR-5 rock speakers are used on a mono 70V/100V rail, with two additional (2) JR-8SW rock subwoofers connected in 4 ohm mono, all wired to (1) JDA-500 DSP amplifier.

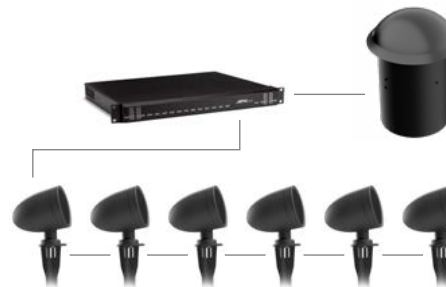


SPACE SIZE: UP TO 2000' SQ

TOTAL ZONES: 2

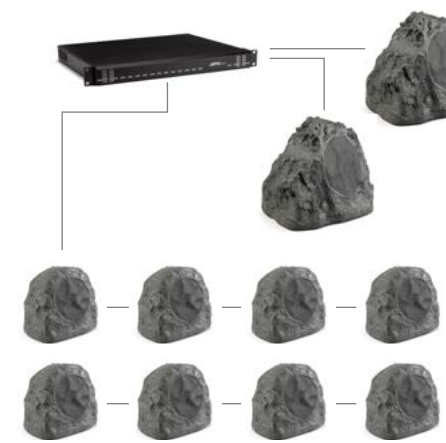
ZONE 1

- (6) JL-4 SATELLITE SPEAKERS
- (6) JGS-10 GROUND STAKES
- (1) JL-10SW HALF-BURIAL SUBWOOFER
- (1) JDA-500 DSP AMPLIFIER



ZONE 2

- (8) JR-5 ROCK SPEAKERS
- (2) JR-8SW SUBWOOFERS
- (1) JDA-500 DSP AMPLIFIER





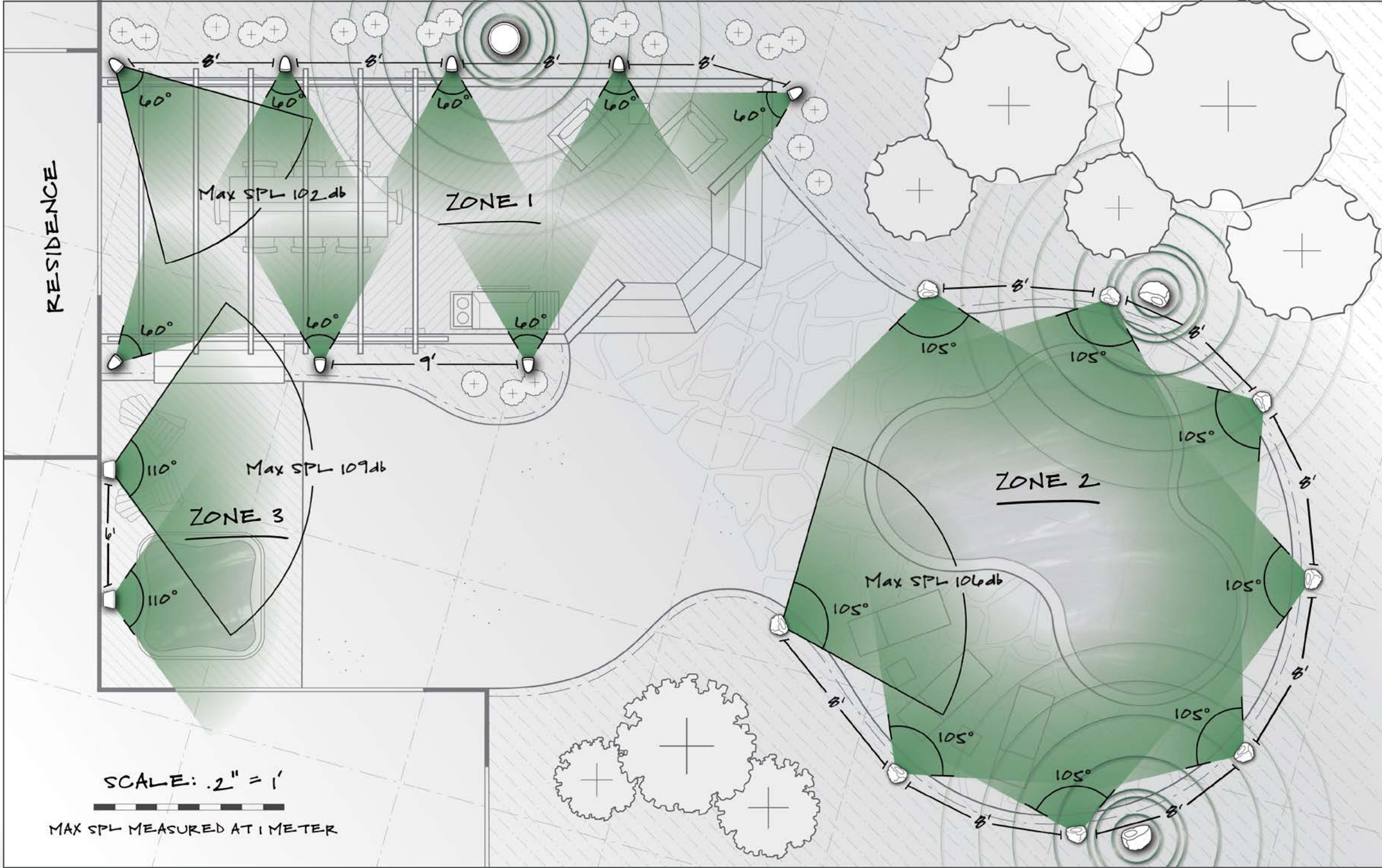
Up to 4000' sq - 3 Zones

FULLY IMMERSIVE AUDIO ENVIRONMENT

The large outdoor space uses three separate zones of premium audio. The patio area (Zone 1) uses (8) JL-4 landscape satellite speakers in walking stereo for optimal sound staging and separation, wired in 70V/100V to accommodate the relatively long run, powered by (1) JDA-500 DSP amplifier. The low end in this zone is supported by (1) JL-10SW half-burial subwoofer, with each voice coil run to a bridged output of (1) JDA-500 DSP amplifier in low impedance for maximum output.

The pool area (Zone 2), uses (8) JR-5 rock speakers wired in 70V/100V mono with (2) JR-8SW rock subwoofers in 4 ohm mono. The entire zone is powered by (1) JDA-500 DSP amplifier.

The small hot tub area (Zone 3) utilizes (2) I/O 6 all-weather speakers in stereo, wired to two bridged outputs of (1) JDA-500 DSP amplifier.



SPACE SIZE: UP TO 4000' SQ
TOTAL ZONES: 3

ZONE 1

(1) JL-4810 LANDSCAPE SYSTEM CONTAINING:
(8) JL-4 SATELLITE SPEAKERS
(8) JGS-10 GROUND STAKES
(1) JL-10SW HALF-BURIAL SUBWOOFER
(2) JDA-500 DSP AMPLIFIERS

ZONE 2

(8) JR-5 ROCK SPEAKERS
(2) JR-8SW ROCK SUBWOOFERS
(1) JDA-500 DSP AMPLIFIER

ZONE 3

(2) I/O 6 ALL-WEATHER SPEAKERS
(1) JDA-500 DSP AMPLIFIER



Up to 6000' sq - 4 Zones including an Outdoor Cinema

ULTIMATE AUDIO EXPERIENCE WITH OUTDOOR CINEMA

This grand outdoor space is separated into four total zones. Three zones are dedicated to premium audio listening and one for the outdoor cinema experience.

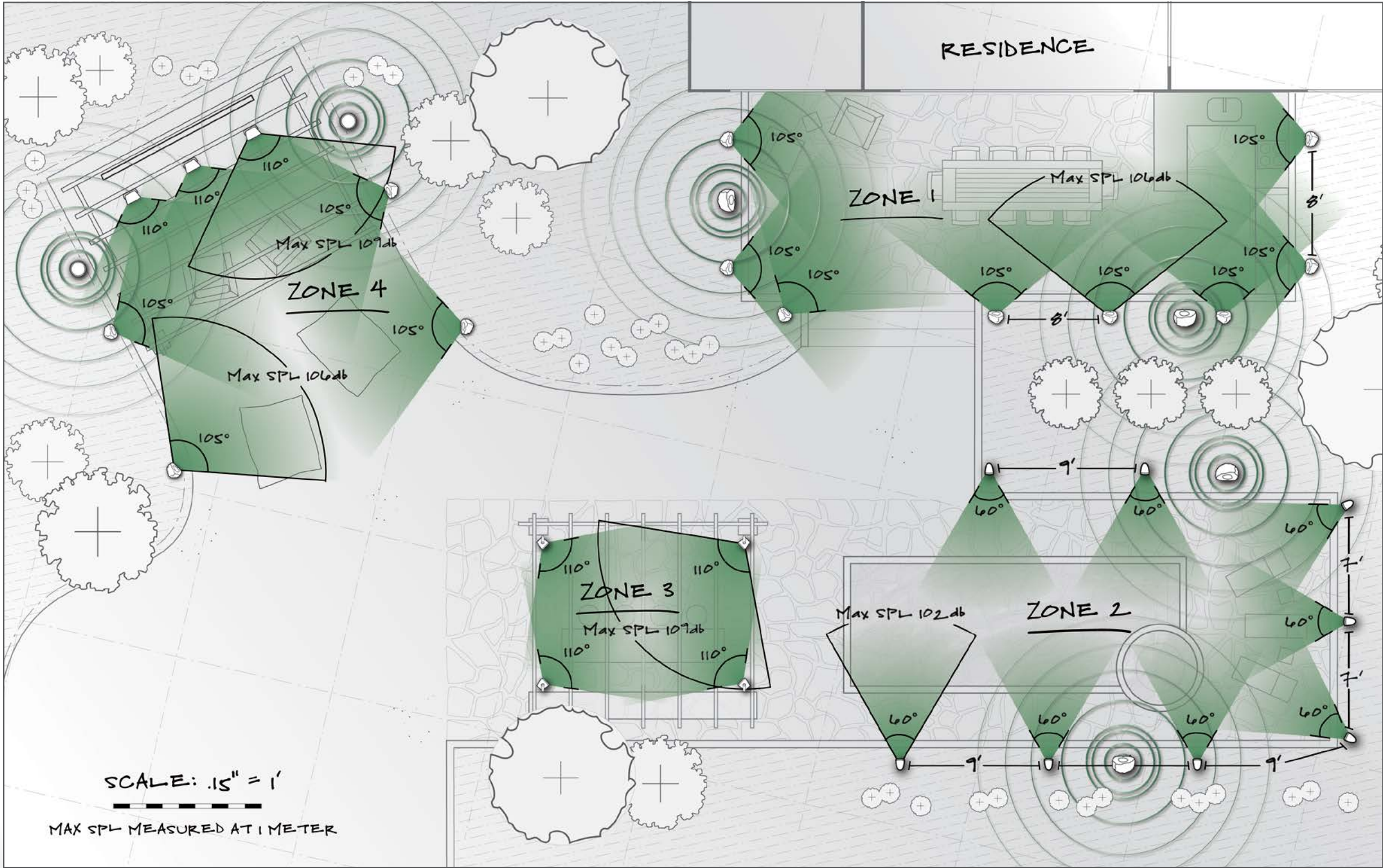
The patio area (Zone 1) uses (8) JR-5 rock speakers in walking stereo for optimal sound-staging and separation, wired in 8 ohm for maximum detail, powered by (2) JDA-500 DSP amplifiers. The low end in this zone is supported by (2) JR-8SW rock subwoofers, with each voice coil run to a single output of (1) JDA-500 DSP amplifier in low impedance for maximum output.

The pool/hot tub area (Zone 2), uses (8) JL-4 landscape speakers wired in 70V powered by (1) JDA-500 DSP amplifier. This area features (2)

JR-8SW rock subwoofers with each voice coil run to an output of (1) JDA-500 DSP amplifier.

The pool side bar (Zone 3) is a smaller system, with (4) I/O 6 all-weather speakers wired in stereo 4 ohm from (1) JDA-500 DSP amplifier.

The Outdoor 7.2 Cinema with 160" drop down screen (Zone 4) consists of (4) JR-5 rock speakers providing surround sound and (3) I/O 5 all-weather surface mount speakers wired 8 ohm for the left, right and center from (2) JDA-500 DSP amplifiers and (2) JL-10SW half-burial subwoofers wired 8 ohm from (1) JDA-500 DSP amplifier for low frequencies.



SPACE SIZE: UP TO 6000' SQ	
TOTAL ZONES: 4	
ZONE 1	(8) JR-5 ROCK SPEAKERS (2) JR-8SW ROCK SUBWOOFERS (3) JDA-500 DSP AMPLIFIERS
ZONE 2	(8) JL-4 LANDSCAPE SPEAKERS (2) JR-8SW ROCK SUBWOOFERS (2) JDA-500 DSP AMPLIFIERS
ZONE 3	(4) I/O 6 ALL-WEATHER SPEAKERS (1) JDA-500 DSP AMPLIFIER
ZONE 4	(4) JR-5 ROCK SPEAKERS (3) I/O 5 ALL-WEATHER SPEAKERS (2) JL-10SW HALF-BURIAL SUBWOOFERS (3) JDA-500 DSP AMPLIFIERS (1) 7.2 SURROUND SOUND PROCESSOR

SPECIFICATIONS



JL-4

PLACEMENT	Front/center/surround
SYSTEM	Landscape satellite
WOOFER	165mm / 6.5"
TWEETER	13mm / .5"
POWER	25 watts (50 watts peak)*
SENSITIVITY	88dB @ 2.8V/1m
FREQUENCY RANGE	75Hz – 22kHz
IMPEDANCE	8 ohms
WEIGHT	1.1 kg / 2.4 lb
DIMENSIONS	Ø227mm (8.9") x 70mm (2.8")
FINISH	White (paintable)
ACCESSORIES	Requires optional JGS-10 ground stake (sold separately)



JL-10SW

PLACEMENT	Front/center/surround
SYSTEM	Half-burial subwoofer
WOOFER	203mm / 8"
TWEETER	13mm / .5"
POWER	25 watts (80 watts peak)*
SENSITIVITY	88dB @ 2.8V/1m
FREQUENCY RANGE	50Hz – 22kHz
IMPEDANCE	8 ohms
WEIGHT	1.6 kg / 3.5 lb
DIMENSIONS	Ø272mm (10.7")
HOLE DIMENSIONS	Ø241mm (9.5") x 93mm (3.7")
BACK BOX SIZE	FRB8.5
OPTIONAL RIK	RIK8.5LW
FINISH	White (paintable)



JR-6

SYSTEM	Stereo rock speaker
FREQUENCY RANGE	67Hz – 22kHz
TWEETER	Dual 1.9cm (.75") aluminum tweeters
WOOFER	16.5cm (6.5") DVC IMG woofer
SENSITIVITY	88dB @ 2.83V/1m
POWER	2 x 50W
IMPEDANCE	2 x 8 ohm / 70V
ENCLOSURE MATERIAL	UV treated fiberglass
GRILL MATERIAL	Rust-proof aluminum
WEIGHT	5.53 kg / 12.2 lb
DIMENSIONS	310mm (12.24")H x 307mm (12.09")W x 295mm (11.65")D
FINISH	Granite or Sandstone



JR-5

SYSTEM	Rock satellite
FREQUENCY RANGE	93Hz – 20kHz
TWEETER	2.54cm (1") Aluminum tweeter with WaveGuide
WOOFER	12.7cm (5") IMG woofer
SENSITIVITY	88dB @ 2.83V/1m
POWER	60W
70V / 100V TAP SETTINGS	70V: 3.75W, 7.5W, 15W, 30W 100V: 7.5W, 15W, 30W 8 ohm bypass
ENCLOSURE MATERIAL	UV treated fiberglass
GRILL MATERIAL	Rust-proof aluminum
WEIGHT	3.62 kg / 8 lb
DIMENSIONS	265mm (9.46")H x 247mm (10.35")W x 234mm (7.97")D
FINISH	Granite or Sandstone



JL-4810

SYSTEM CONTENTS	(8) JL-4 satellites, (1) JL-10SW half-burial subwoofer, (8) JGS-10 ground stakes
FREQUENCY RANGE	39Hz - 20Hz
SENSITIVITY	89dB (2.83V @ 1m)
IMPEDENCE	70V/100V or 8 OHM
POWER HANDLING	200W*
ADDITIONAL SPECS	See JL-4 and JL-10SW above



JGS-10

DESCRIPTION	10" ground stake
MATERIAL	Ground stake: glass-filled ABS Security plate: galvanized stamped steel
INCLUDED IN BOX	10" ground stake, 7" security plate, installation manual
FINISH	Matte Gun Metal Grey
DIMENSIONS	300mm H, 85mm W, 85mm D 11.81" H, 3.35" W, 3.35" D
WEIGHT	.91 kg (2 lbs)
FOR USE WITH	JL-4 landscape satellite



JR-4

SYSTEM	Rock satellite
FREQUENCY RANGE	115Hz – 20kHz
DRIVER	4" Long-throw aluminum full-range driver
SENSITIVITY	85dB @ 2.83V/1m
IMPEDANCE	70V / 8 ohm
POWER	50W
70V TRANSFORMER	25W
ENCLOSURE MATERIAL	UV treated fiberglass
GRILL MATERIAL	Rust-proof aluminum
WEIGHT	2.27 kg / 5.0 lb
DIMENSIONS	192mm (7.58")H x 226mm (8.91")W x 176mm (6.91")D
FINISH	Granite or Sandstone



JR-8SW

SYSTEM	Rock subwoofer speaker
FREQUENCY RANGE	38Hz – 125kHz
DRIVER	20.3 cm (8") DVC IMG woofer
SENSITIVITY	87dB @ 2.83V/1m
IMPEDANCE	2 x 8 ohm / 70V / 100V
POWER	2 x 50W
ENCLOSURE MATERIAL	UV treated fiberglass
GRILL MATERIAL	Rust-proof aluminum
WEIGHT	6.12 kg / 13.5 lb
DIMENSIONS	327mm (12.87")H x 379mm (14.92")W x 288mm (11.35")D
FINISH	Granite or Sandstone

SPECIFICATIONS



I/O 6

SYSTEM	6.5" 2-way all-weather speaker
FREQUENCY RANGE	67Hz - 18kHz
POWER	50W RMS / 100W peak
IMPEDANCE	4 ohm
SENSITIVITY	89dB @ 2.8V/1m
TWEETER	25mm (1") aluminum dome
WOOFER	165mm (6.5") aluminum HCC
ENCLOSURE MATERIAL	UV resistant ABS
ENCLOSURE TYPE	Sealed enclosure
INPUTS	Single binding posts
FINISH	Satin Black or Satin White



I/O 5

SYSTEM	5.25" 2-way all-weather speaker
FREQUENCY RANGE	72Hz - 18kHz
POWER	40W RMS / 80W peak
IMPEDANCE	4 ohm
SENSITIVITY	88dB @ 2.8V/1m
TWEETER	25mm (1") aluminum dome
WOOFER	133mm (5.25") aluminum HCC
ENCLOSURE MATERIAL	UV resistant ABS
ENCLOSURE TYPE	Sealed enclosure
INPUTS	Single binding posts
FINISH	Satin Black or Satin White



I/O
8.52DVCA2
FG

SYSTEM	2-way in-ceiling stereo input
WOOFER	203mm / 8"
TWEETER	13mm / 0.5" dome
POWER	2 x 50 watts (2 x 100 watts peak)
SENSITIVITY	89dB @ 2.8V/1m
FREQUENCY RANGE	65Hz - 22kHz
IMPEDANCE	8 ohms + 8 ohms
WEIGHT	1.5 kg / 3.2 lbs
DIMENSIONS	Ø 272mm (10.7")
TEMP. RANGE	-30 °C (-22 °F) to +70 °C (158 °F)
OPTIONAL RIK	RIK8.5LW
OPTIONAL FRB	FRB8.5
FINISH	White (paintable)



I/O
6.52DVCA2
FG

SYSTEM	2-way in-ceiling stereo input
WOOFER	165mm / 6.5"
TWEETER	13mm / 0.5" dome
POWER	2 x 50 watts (2 x 100 watts peak)
SENSITIVITY	89dB @ 2.8V/1m
FREQUENCY RANGE	65Hz - 22kHz
IMPEDANCE	8 ohms + 8 ohms
WEIGHT	1.3 kg / 2.9 lbs
DIMENSIONS	Ø 229mm (9.0")
TEMP. RANGE	-30 °C (-22 °F) to +70 °C (158 °F)
OPTIONAL RIK	RIK6.5LW
OPTIONAL FRB	FRB6.5
FINISH	White (paintable)



I/O 4

SYSTEM	4" 2-way all-weather speaker
FREQUENCY RANGE	80Hz - 18kHz
POWER	35W RMS / 70W peak
IMPEDANCE	4 ohm
SENSITIVITY	86dB @ 2.8V/1m
TWEETER	25mm (1") aluminum dome
WOOFER	102mm (4") aluminum HCC
ENCLOSURE MATERIAL	UV resistant ABS
ENCLOSURE TYPE	Sealed enclosure
INPUTS	Single binding posts
FINISH	Satin Black or Satin White



I/O 3S

SYSTEM	2-way bass reflex stereo input
WOOFER	133mm / 5.25"
TWEETER	2 x 25mm / 1" dome
POWER	2 x 40 watts (2 x 80 watts peak)
SENSITIVITY	88dB @ 2.8V/1m
FREQUENCY RANGE	64Hz - 20kHz
IMPEDANCE	8 ohms + 8 ohms
WEIGHT	3.2 kg / 6.9 lbs
DIMENSIONS	290mm (11.4") H x 200mm (7.9") W x 209mm (8.2") D
TEMP. RANGE	-30 °C (-22 °F) to +70 °C (158 °F)
FINISH	White (paintable), Black



JDA-500 DSP
AMPLIFIER

AMPLIFIER TYPE	High efficiency class G
POWER	500W total system power 4 x 125W per channel
INPUTS	Balanced: 4 x Phoenix line level (up to 12 AWG wire) Unbalanced: 4 x RCA line level (throughs)
OUTPUTS	4 x Phoenix speaker level (up to 12 AWG wire) 4 x RCA line level (throughs)
INPUT SENSITIVITY	Balanced: 4 x Phoenix line level (up to 12 AWG wire) Unbalanced: 4 x RCA line level (throughs)
INPUT IMPEDANCE	4 x Phoenix speaker level (up to 12 AWG wire) 4 x RCA line level (throughs)
THD	<1% @ rated output
SIGNAL-TO-NOISE	-100dB below rated output
MATERIAL	Front face: ABS plastic Case: machine formed steel
RACK UNIT	1RU
DIMENSIONS	44mm (1.73")H x 483mm (19.02")W x 363mm (14.29")D
WEIGHT	6.82 kg (15 lb)
MOUNTING	Removable 1RU rack ears, removable rubber feet



FREE JAMO DESIGN SERVICES

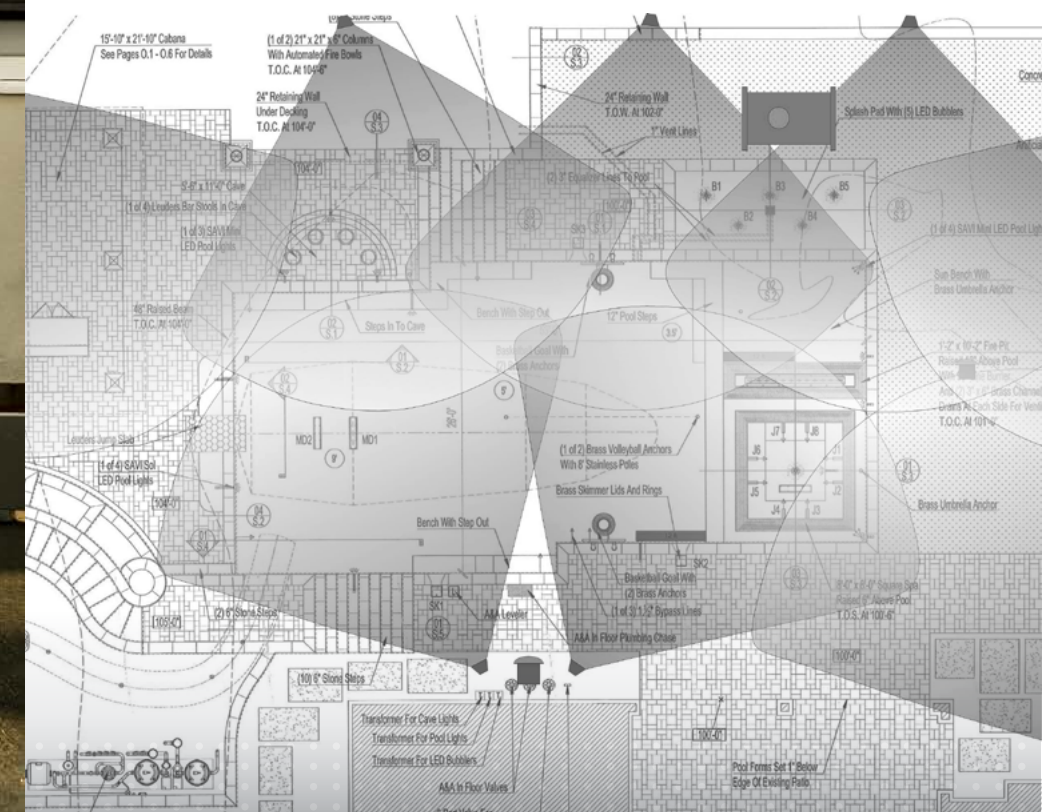
Make the best impression from the initial job quote through the completed installation. We can help you choose the best Jamo speakers and components for the application and help design a system that thoroughly impresses.

Send plans, questions and concepts to:
PROSYSTEMDESIGN@JAMO.COM

Jamo®

VISIT [JAMO.COM](https://www.jamo.com)

FOLLOW US





Jamo⁵⁰

© 2018 Klipsch Group, Inc., a wholly-owned subsidiary of Vox International Corp. Jamo is a registered trademark of Klipsch Group, Inc.

V5-180202